

TERRAIN FORGE

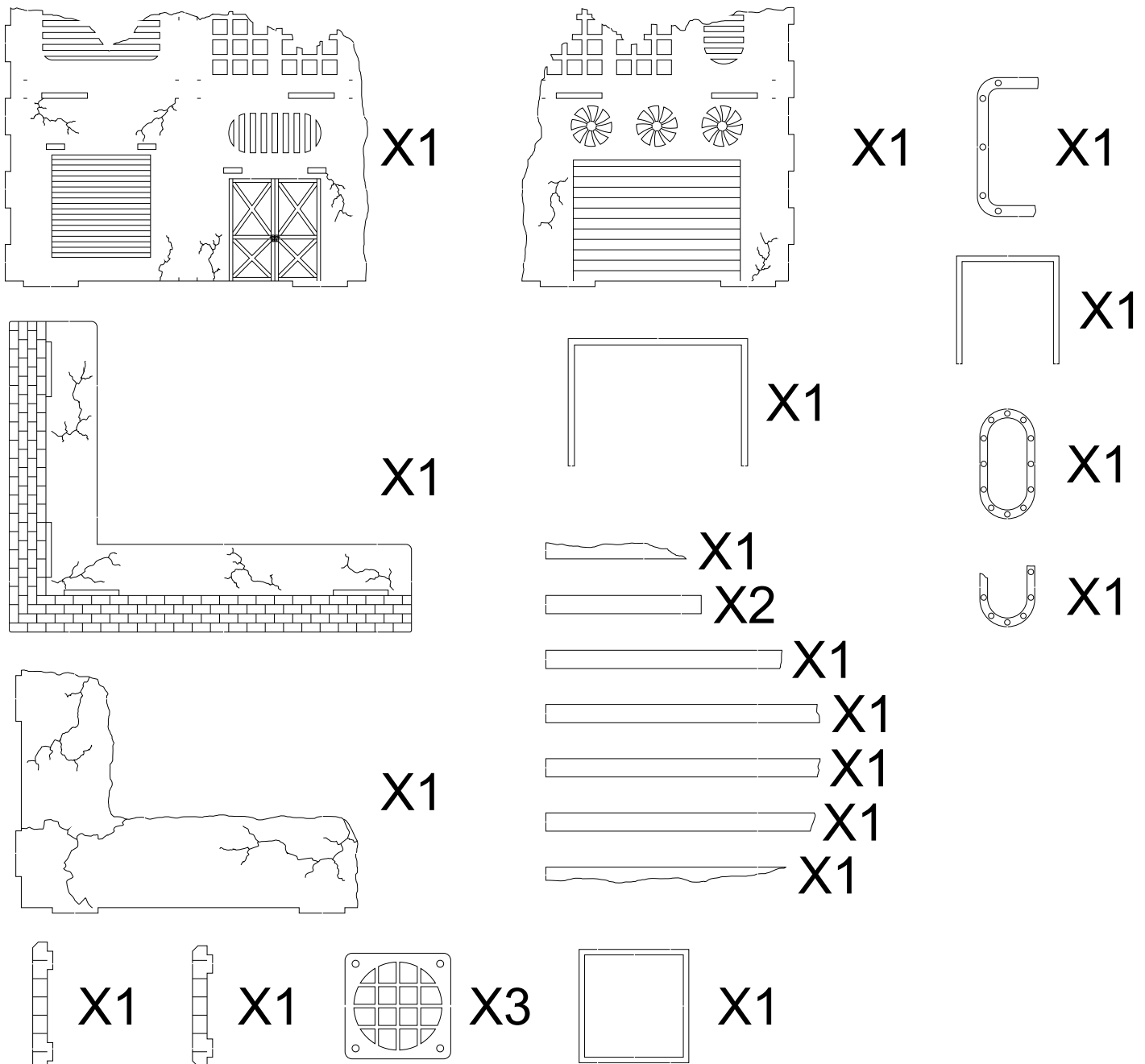
You will need:

- .Wood Glue
- .Craft Knife
- .Sandpaper

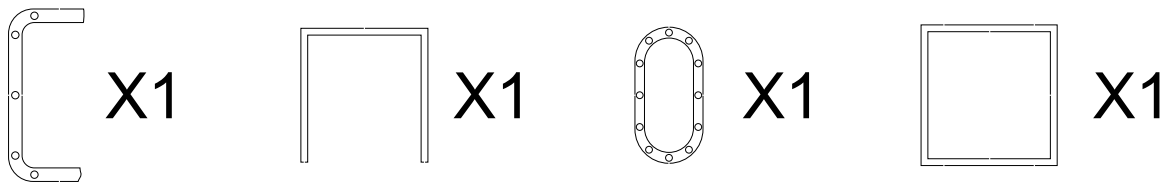
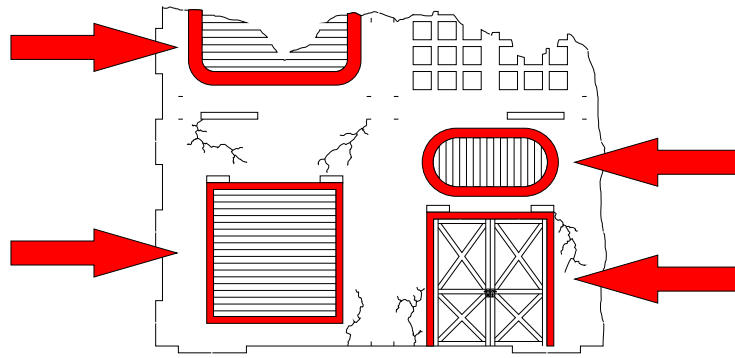
How To Build: UK Spec Medium Ruin

Always test fit pieces before applying any glue. Lightly sand the places where you wish to apply glue, this helps to create a stronger bond between the two surfaces. Always use a strong wood glue, craft pva glue is not recommended.

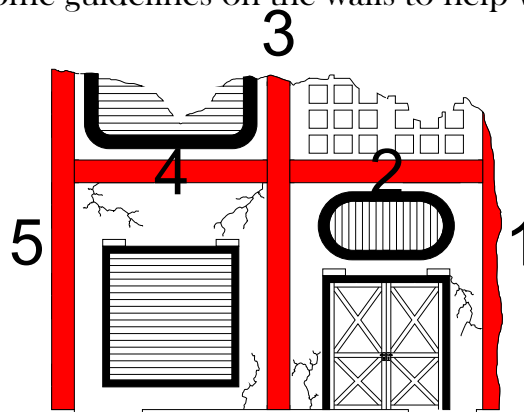
- 1: Carefully remove all the pieces from the sprue, making sure to be extra careful on the smaller pieces. We advise cutting the tabs with a sharp craft knife on the smaller, more delicate pieces.



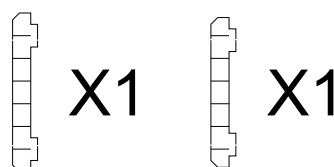
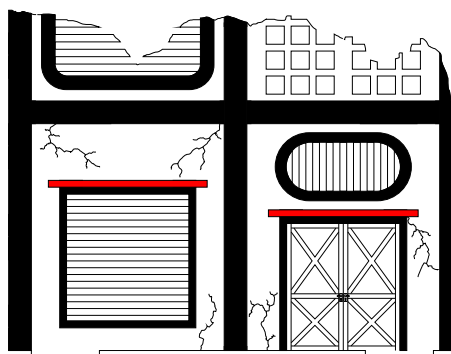
2: Take the first wall piece, and glue on all the frames as shown. Make sure you do not cover up the slots above the door and closed window



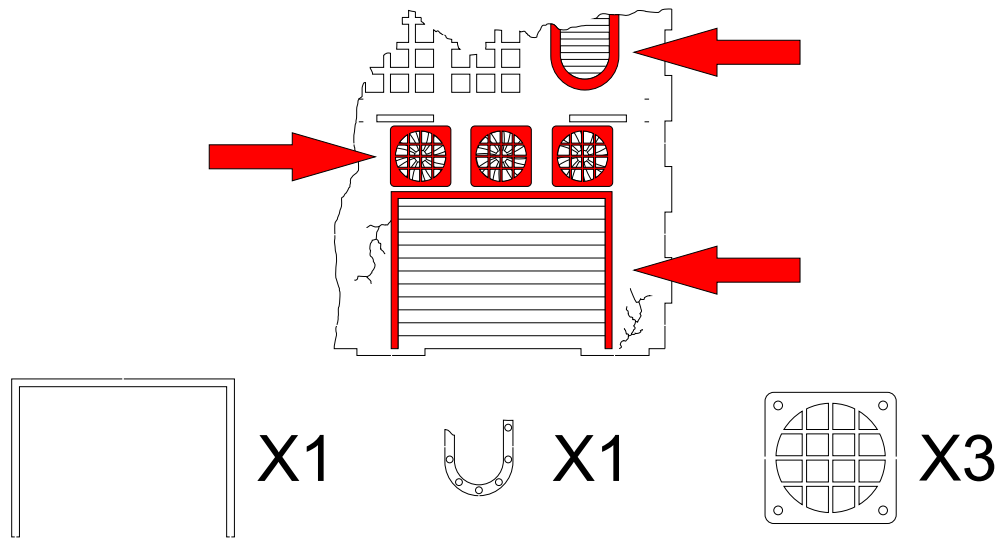
3: Now glue on the edging strips, following the order below. There are some guidelines on the walls to help with alignment



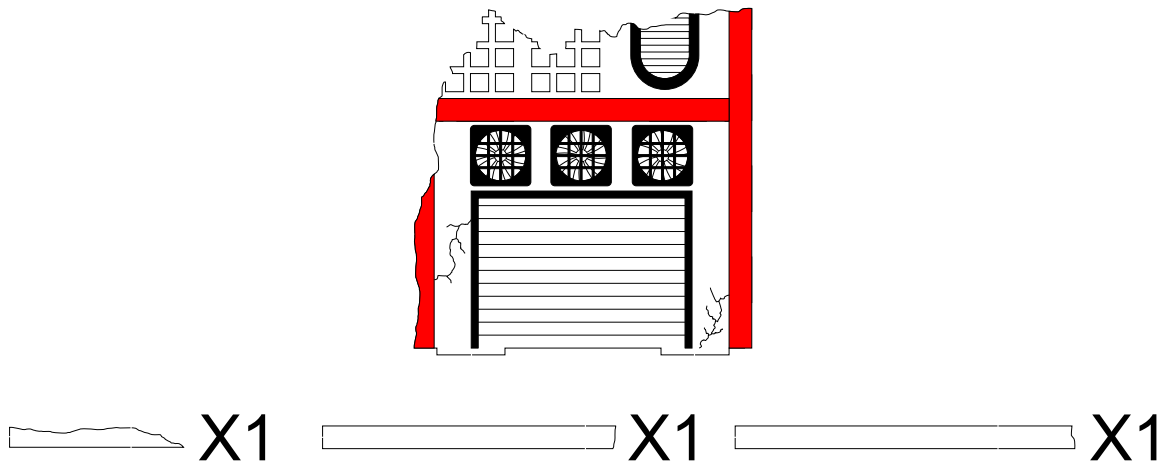
4: Finally, glue in the header plates for the door and closed window



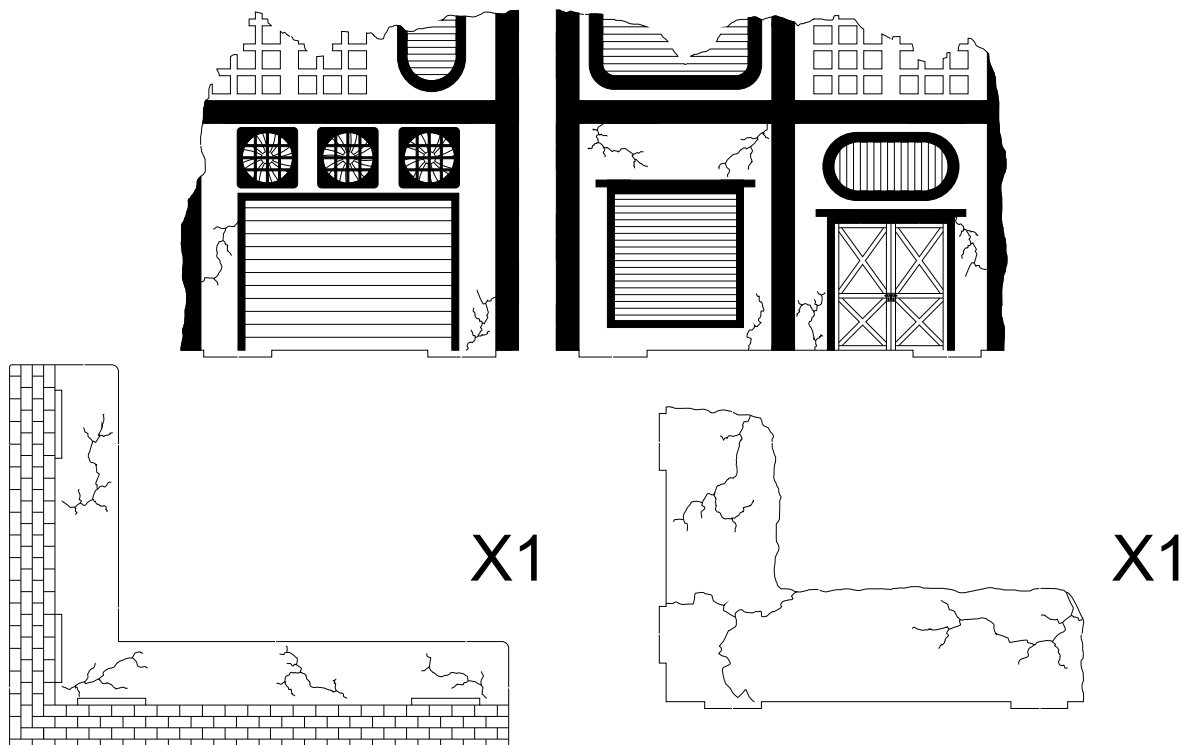
5: Take the second wall piece, and glue on all the frames as shown.



6: Then glue on all the edging strips, there are some guidelines on the walls to help with alignment



7: Now take both the finished walls and the floor piece, and assemble them using the slots and tabs. Then slot it down onto the base piece



.....

8: Your UK Spec Medium Ruin is now complete