

# TERRAIN FORGE

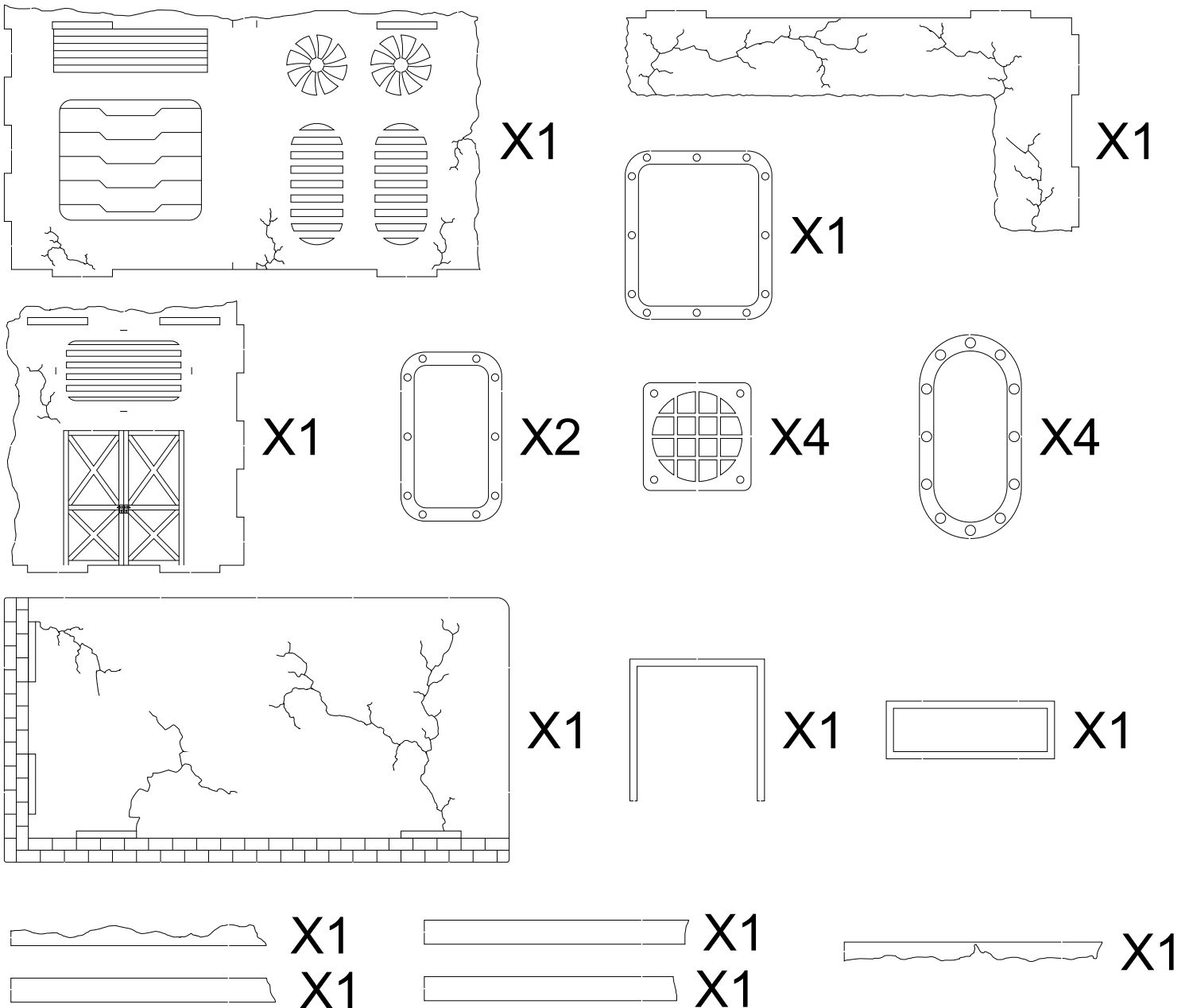
## You will need:

- .Wood Glue
- .Craft Knife
- .Sandpaper

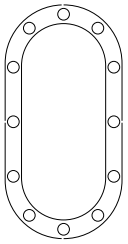
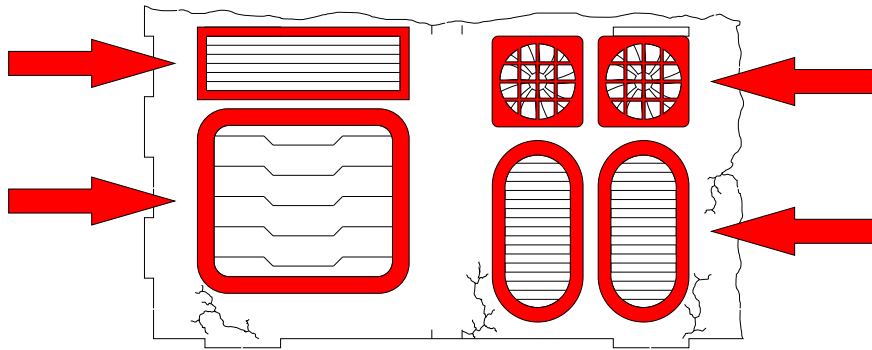
## How To Build:

Always test fit pieces before applying any glue. Lightly sand the places where you wish to apply glue, this helps to create a stronger bond between the two surfaces. Always use a strong wood glue, craft pva glue is not recommended.

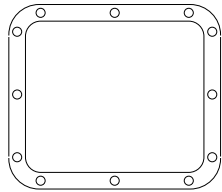
- 1: Carefully remove all the pieces from the sprue, making sure to be extra careful on the smaller pieces. We advise cutting the tabs with a sharp craft knife on the smaller, more delicate pieces.



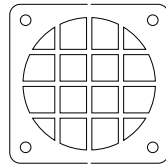
2: Take the first wall piece, and glue on all the frames as shown.



X2



X1

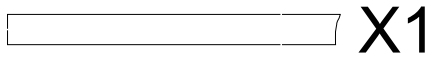
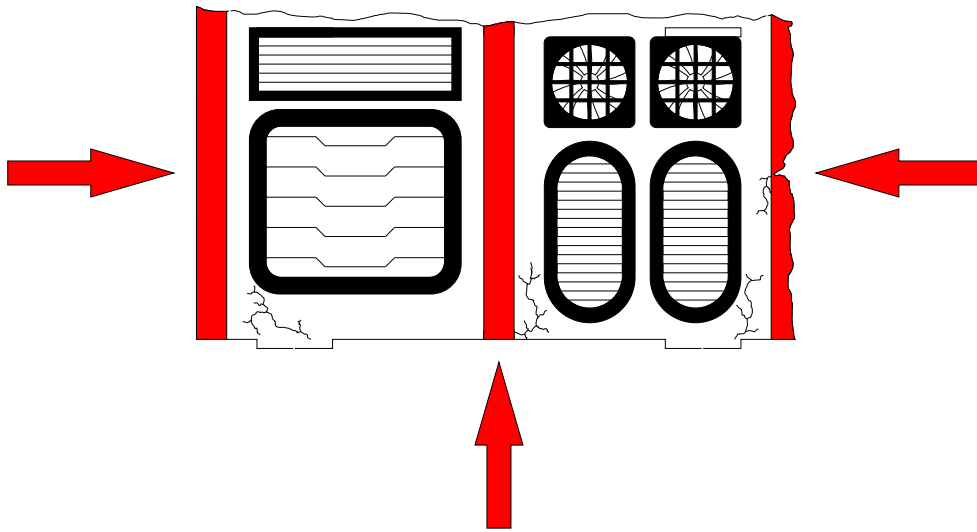


X2

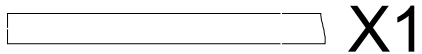


X1

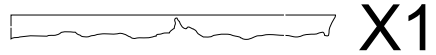
3: Now glue on the edging strips.  
There are some guidelines on the walls to help with alignment



X1

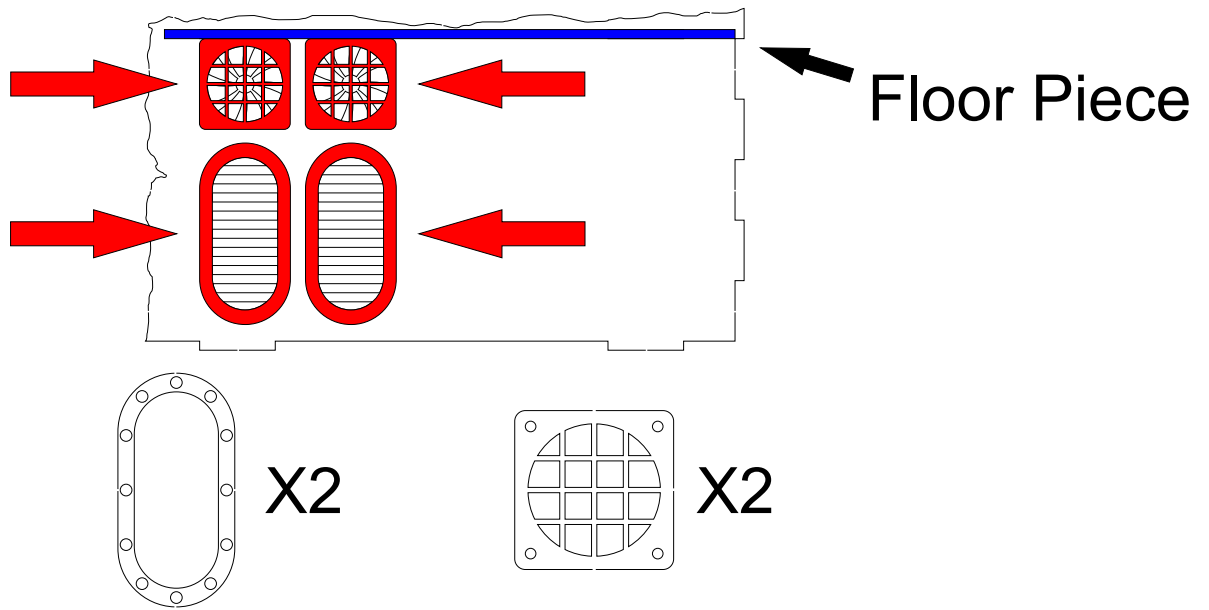


X1

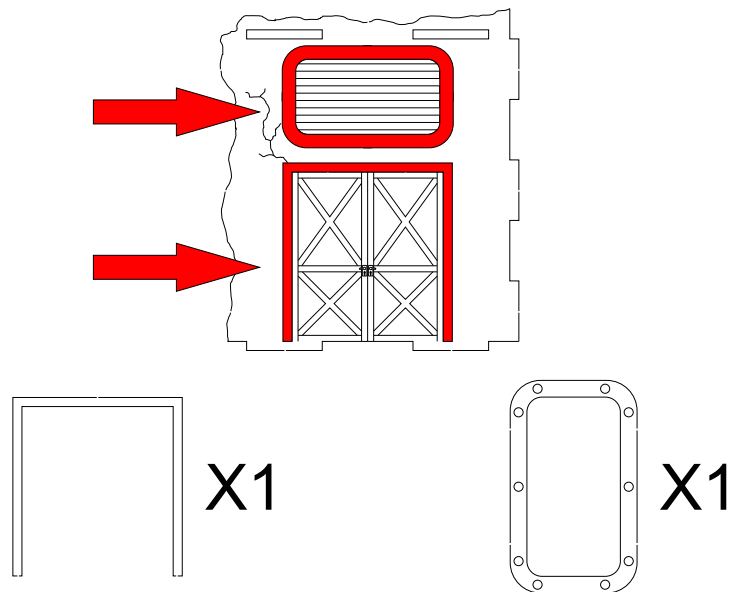


X1

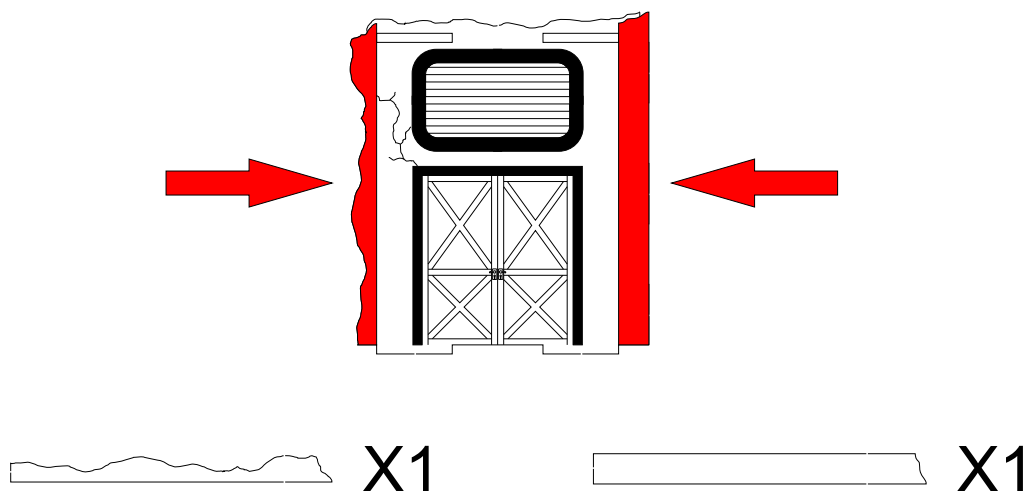
4: Now flip it over, and glue on the last of the frames as shown. Place the floor piece in place temporarily while you do this, to prevent placing the frames too high



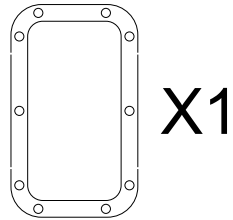
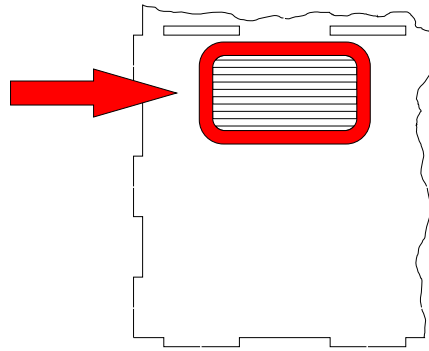
5: Next take the second wall piece, and glue on the frames as shown



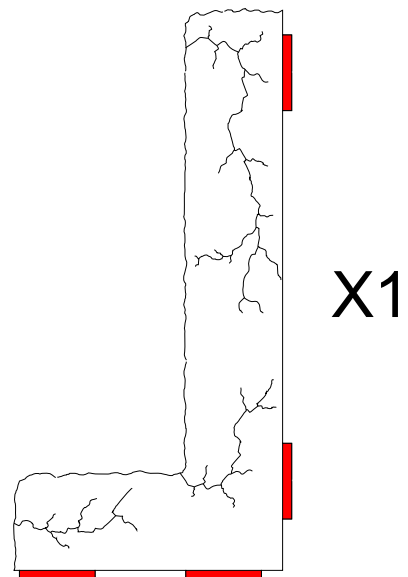
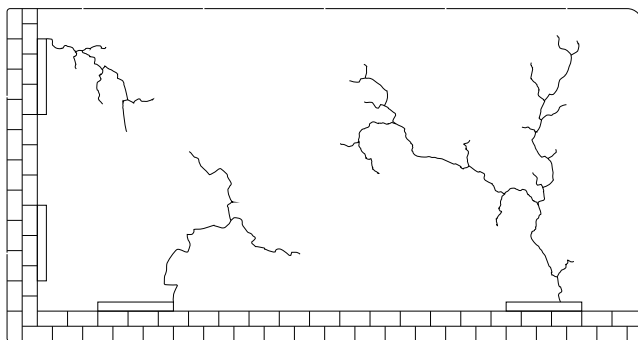
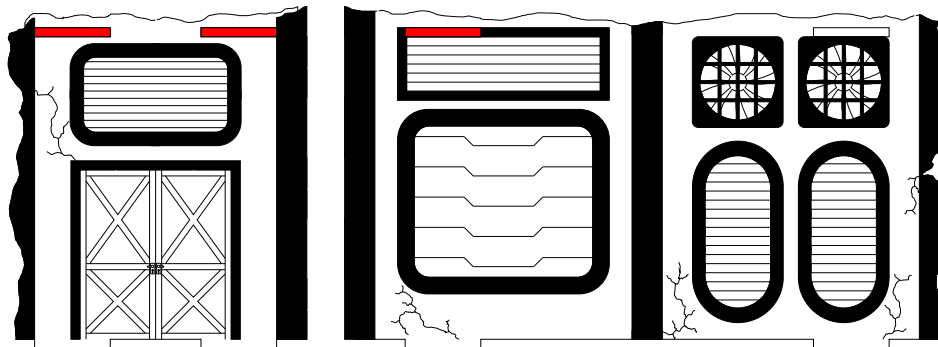
6: Now glue on the edging strips as shown.



7: Now flip it over, and glue on the last frame as shown.



8: Now take both the finished walls and the floor piece, and assemble them using the slots and tabs. Then slot it down onto the base piece



9: Your UK Spec Small Ruin is now complete